



Snack & Learn Webinar on Future Ready Projects

Central Park





Acknowledgement of Country

We would like to pay our respect and acknowledge all the traditional custodians of this land on which we meet, including the Gadigal people of the Eora nation, for it is in their country that the project was built.

We would like to pay our respects to Elders past, present and future.



Snack & Learn Webinar on Future Ready Projects

Central Park



Future Ready

**See the future
more clearly**

**Design for
it today**

**Better
outcomes for
people and
places**

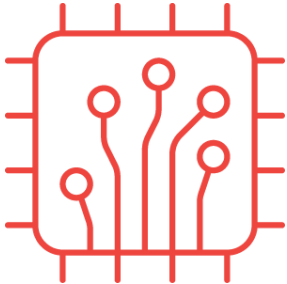
Taking a Holistic View



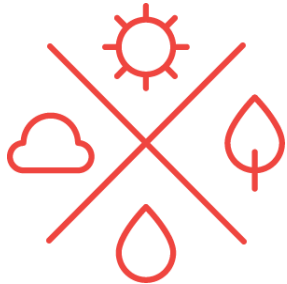
Climate



Society



Technology



Resources

Speakers



Katie Fallowfield

Associate Director - Sustainability

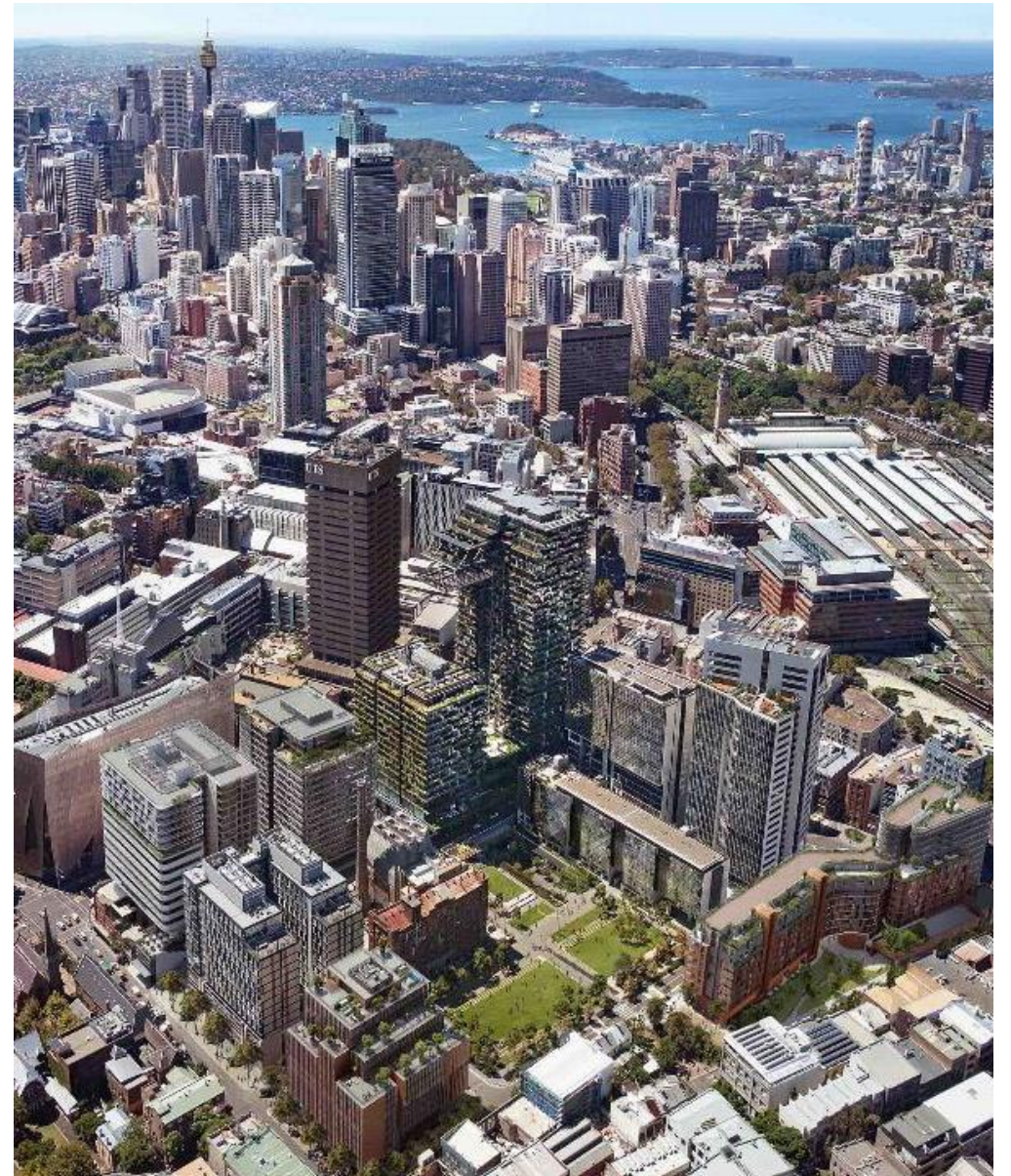
PROP Specialist - Sustainability

Central Park

Frasers Property Australia & Sekisui House Australia

ARCHITECTS

Foster & Partners,
Ateliers Jean Nouvel,
Johnson Pilton Walker and
Peddle Thorp and Walker



Project location

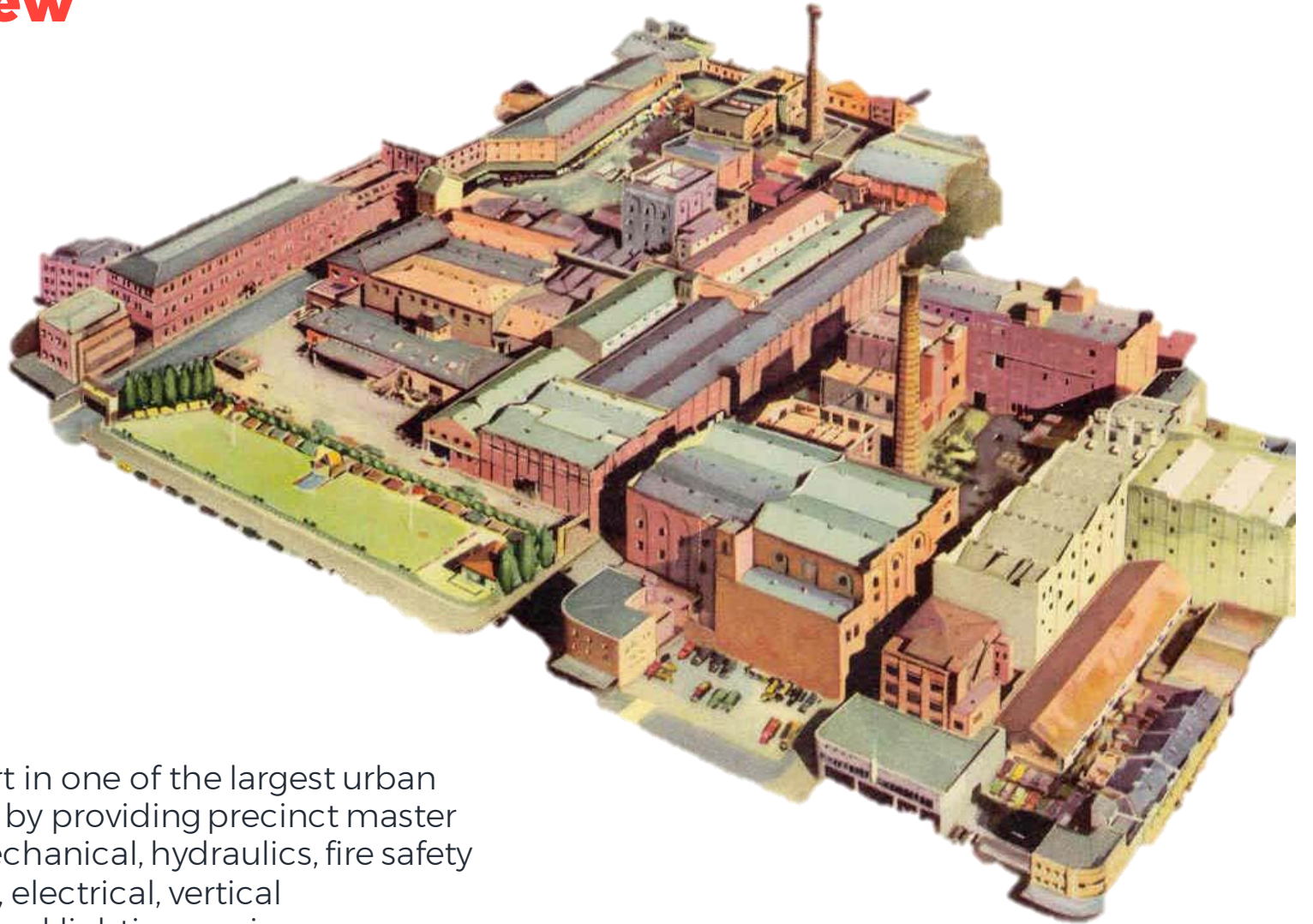


Project area located Sydney CBD, in NSW

Central Park



Project Overview



Solution

WSP played an integral part in one of the largest urban renewal projects in Sydney by providing precinct master planning, sustainability, mechanical, hydraulics, fire safety and protection, ASP level 3, electrical, vertical transportation, Green Star and lighting services.

Project Overview

11

No. Blocks

2,300

Apartments

1,000

Student Beds

13,500m²

of Retail Space

6,000m²

of Commercial Space

Up to **360**

Hotel Rooms

3

Heritage Pubs

6,000m²

Public Park

Original Masterplan

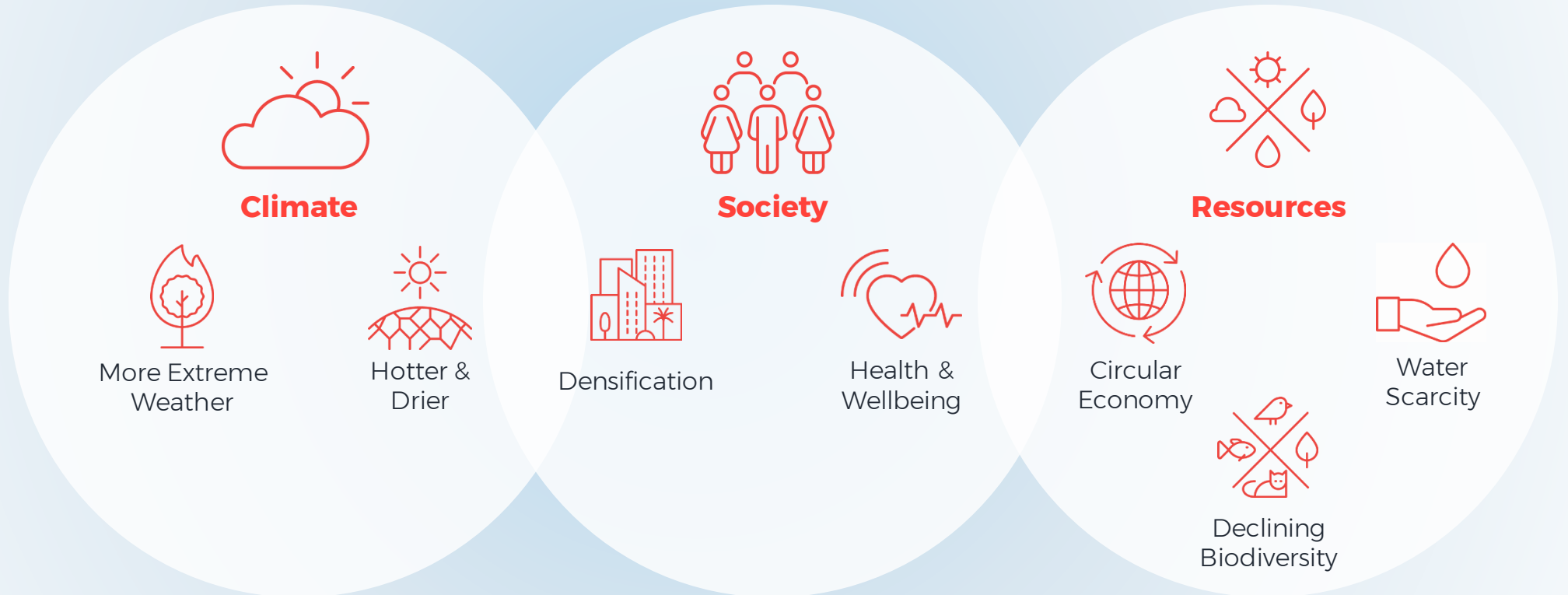
220,000m² GFA

Revised Masterplan

255,000m² GFA

Central Park Precinct

Future Trends





Climate



Focus on building design for a hotter, drier climate with more extremes in weather conditions



Building designs achieve higher resilience to temperature extremes through improved building fabric and architectural design

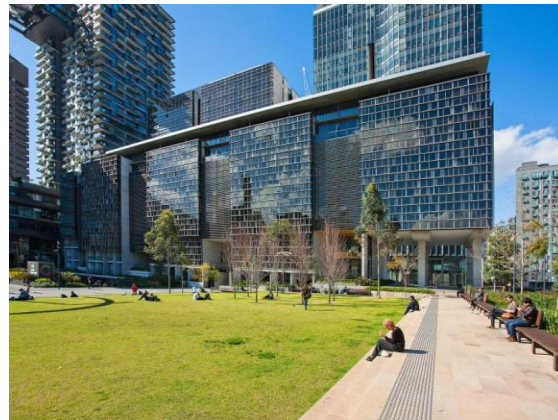
Reduced reliance on infrastructure by providing on site systems

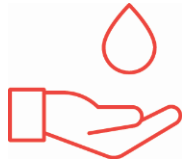




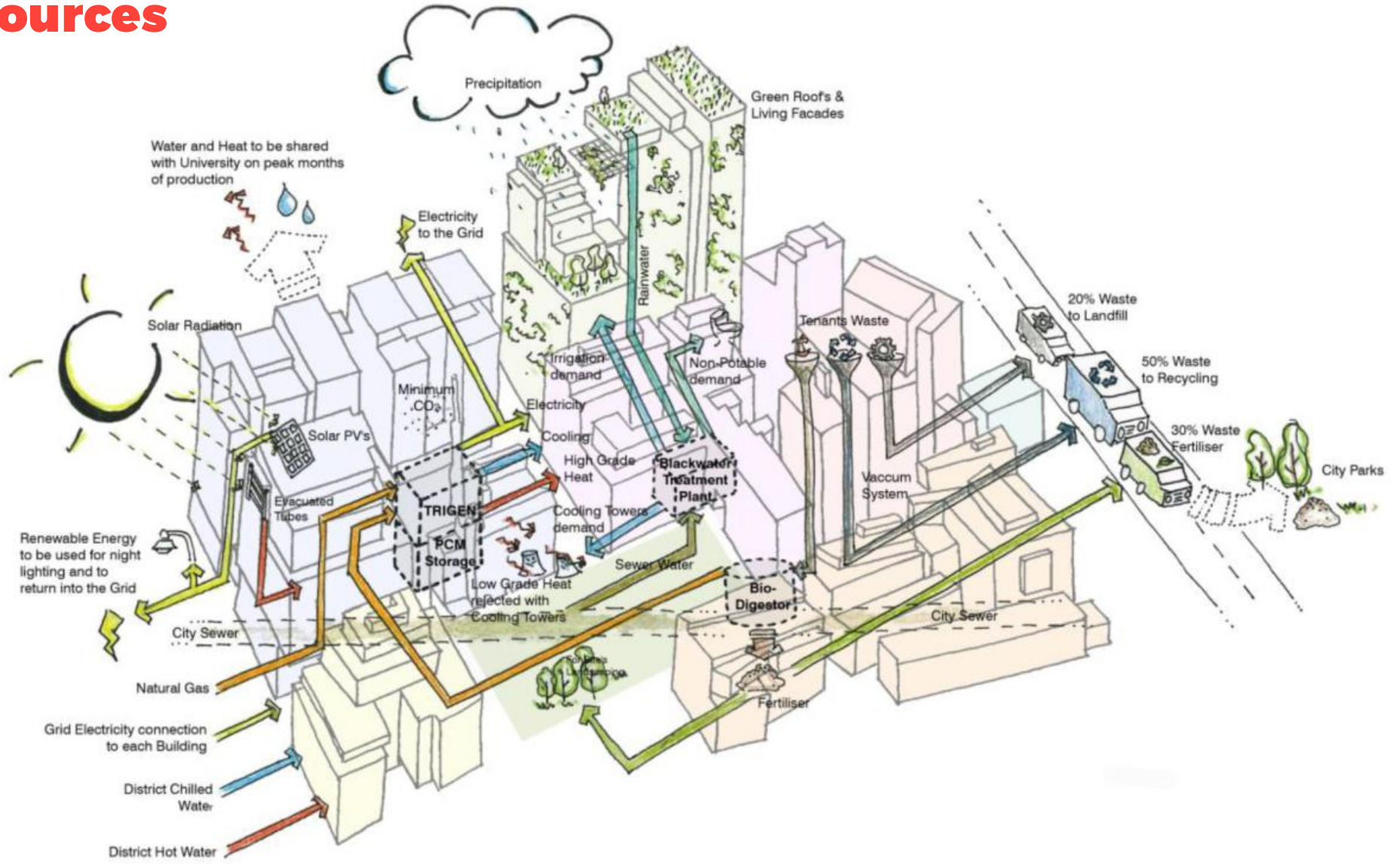
Society

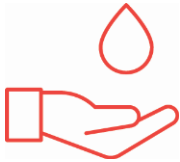
- Responds to the need for densification
- Spaces designed for people
- Healthy indoor environments
- Community facilities



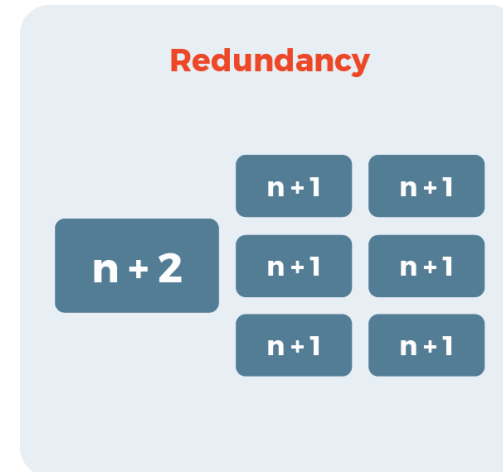
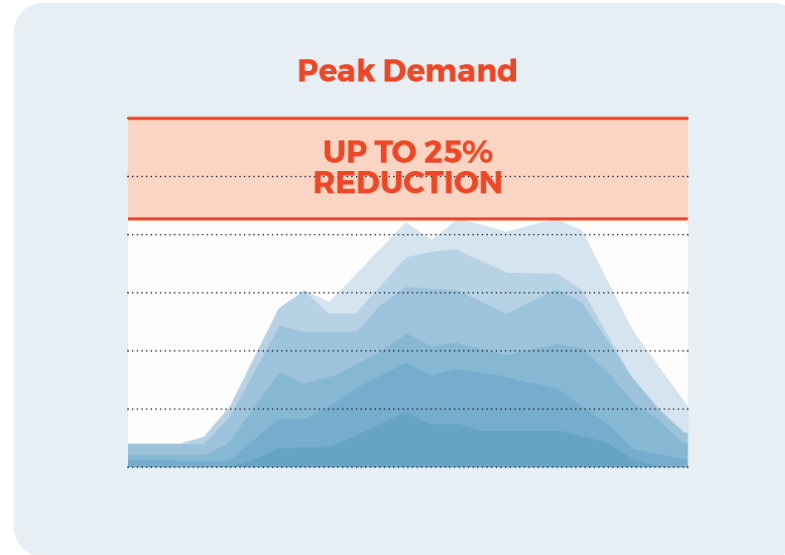
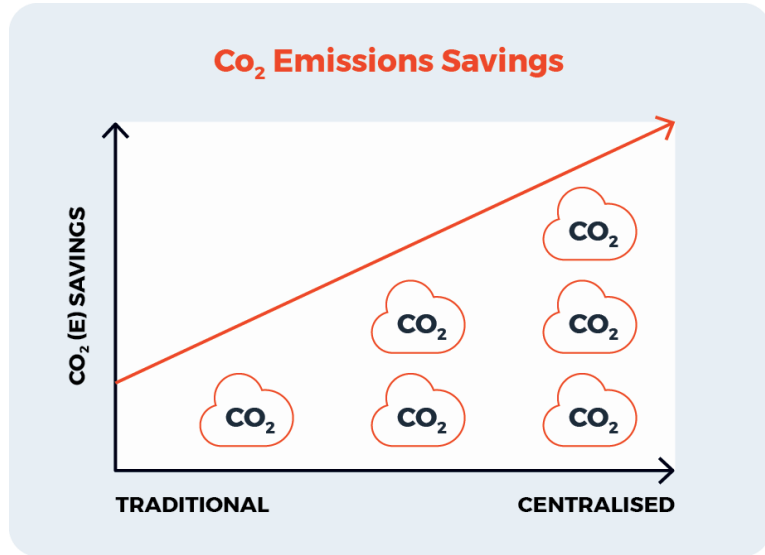


Resources





Resources



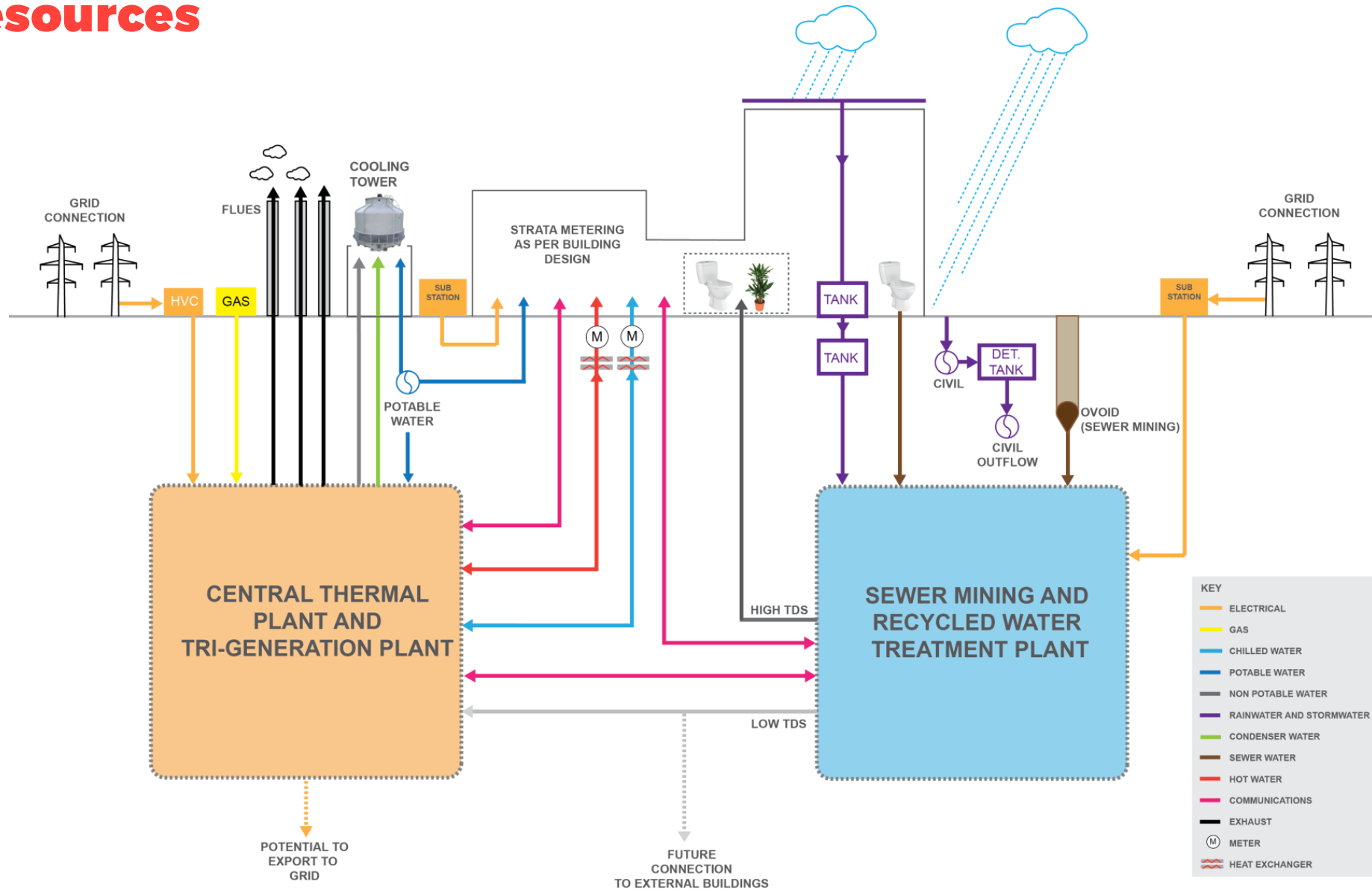
Grid Electricity
GHG Emissions
Coefficient
1.07 kgCO₂-e/kWh

Gas Network
GHG Emissions
Coefficient
0.257 kgCO₂-e/kWh

CTP GHG
Emissions
Coefficient
0.3 kgCO₂-e/kWh



Resources





Biodiversity



Project Benefits

The Central Park Precinct includes:

- Residential accommodation to meet increasing housing demands in Sydney
- Student accommodation for the multiple educational facilities in the area - USyd, UTS, Uni of Notre Dam and TAFE Broadway
- Much needed retail and dining areas
- Revitalised urban centre

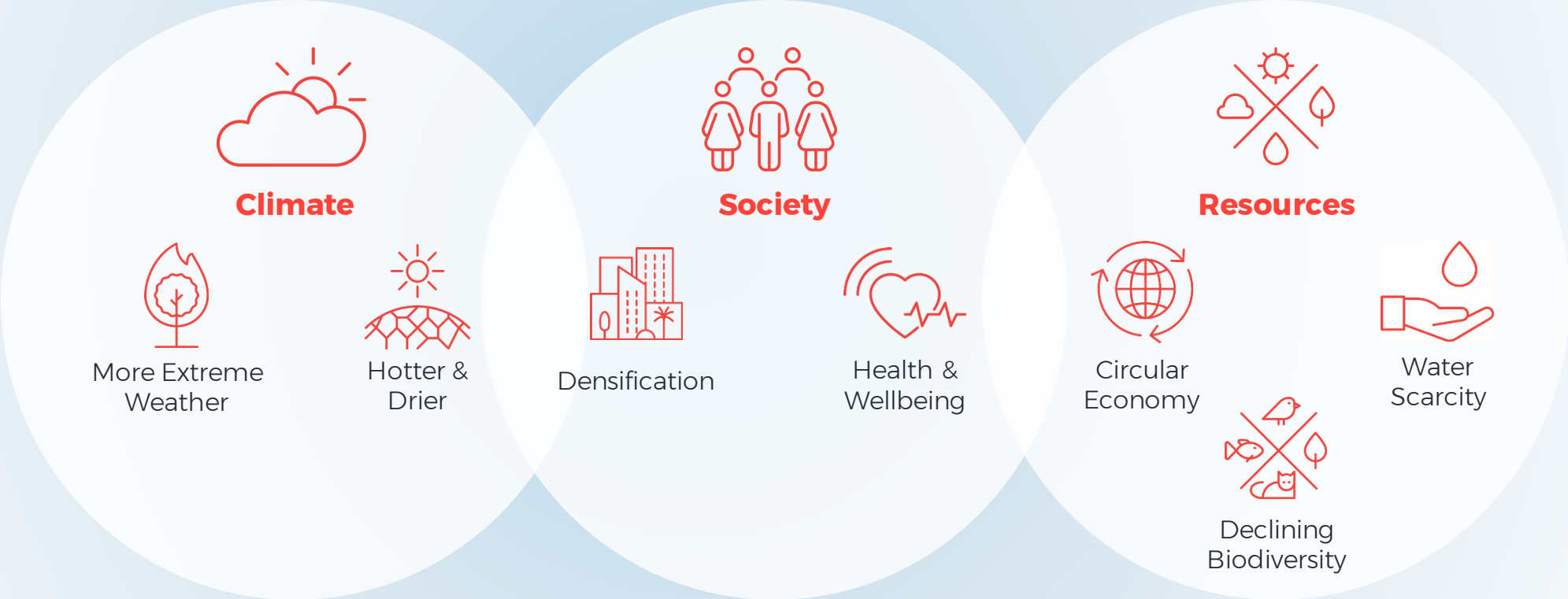
The Benefits of the Central Park Precinct include:

- Reduced reliance on infrastructure
- Significant carbon emissions reductions
- No potable water used for non-potable demands
- Supports densification and livability



Central Park Precinct

Future Trends



Future Ready Approach



At Central Park, 'sustainability' is more than a buzzword – it's an attitude that requires an honest, thoughtful analysis of how we live our lives today, in order to create a better world tomorrow.

Of course, sustainability is not just about embracing the latest green technologies. It's about creating environments that stand the test of time, and neighbourhoods that fulfil our desire to live, work and play close to the city, reducing our reliance on cars. Sustainability also requires elegant architectural forms, and an abundance of public parks and spaces. It's based on the philosophy that quality urban environments lift our spirits, and improve our happiness and wellbeing.

- Frasers Property Australia

Q & A

Katie Fallowfield

Katie.fallowfield@wsp.com

*WSP Australia Pty Ltd
Level 27, 680 George Street
Sydney, NSW
2000 Australia
+61 2 8907 0904*

wsp.com

Upcoming Webinars

Tell your friends

Going Underground to Strengthen Community Connection in New Zealand

Wednesday 22 April, 12pm (AEST)



Charlie Jewkes

Director of Transport Australia

Revitalising Communities and Creating Public Space in Victoria

Thursday 30 April, 12pm (AEST)

Creating Smart Cities for the Future

Tuesday 5 May, 12pm (AEST)

Designing Transport Facilities for all Ages and Abilities (AAA) in the Community

Wednesday 13 May, 12pm (AEST)