



Snack & Learn Webinar on Future Ready Projects

Waterview Connection







Snack & Learn Webinar on Future Ready Projects

Waterview Connection



Future Ready

**See the future
more clearly**

**Design for
it today**

**Better
outcomes for
people and
places**

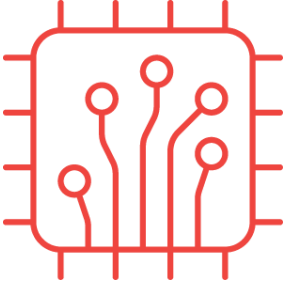
Taking a Holistic View



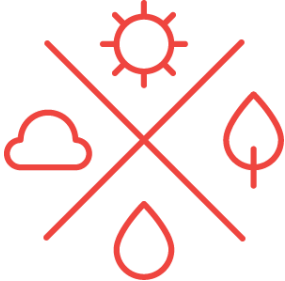
Climate



Society



Technology



Resources

Speaker



Charlie Jewkes

Director of Transport, Australia

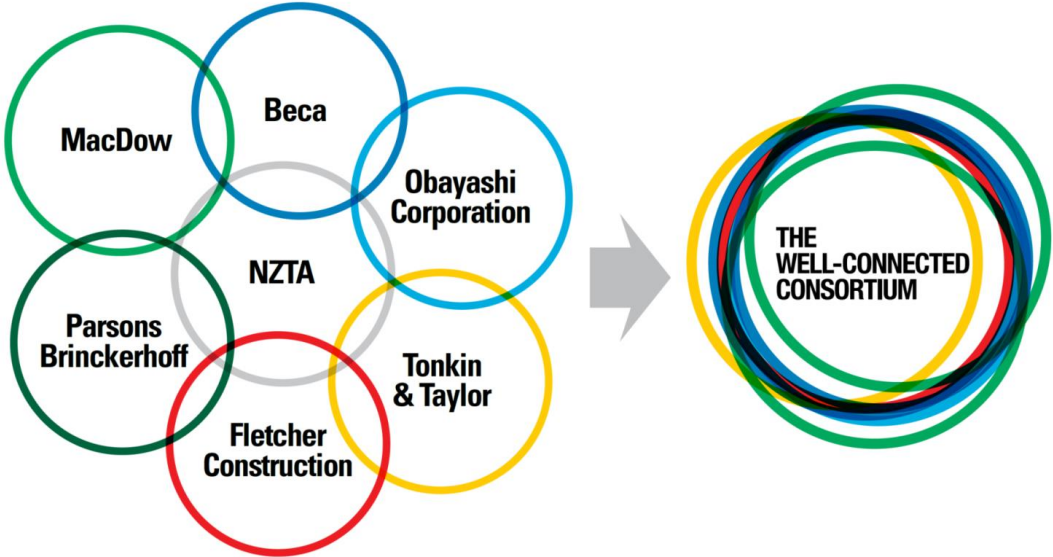
Waterview Connection

New Zealand Transport Agency is focused on providing one integrated land transport system that helps people get the most out of life and supports business. They are responsible for:

- Transport safety
- Creating liveable communities
- Transport technology
- Managing risks and long-term resilience challenges of the land transport system
- Responsibly manage the land transport system's interaction with people, places and the environment



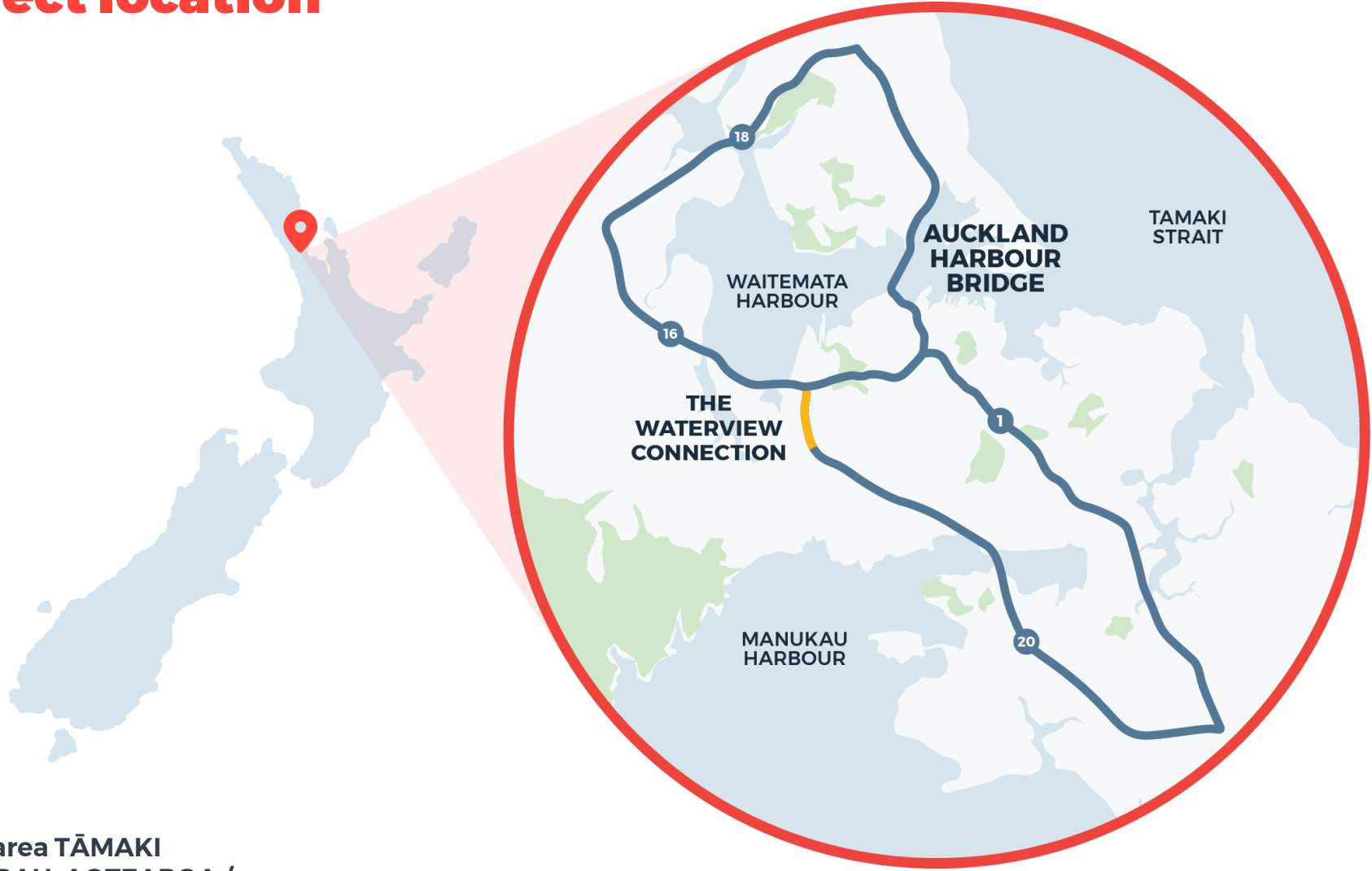
Alliance Participants



Waterview Connection

COMPLETING THE WESTERN RING ROUTE

Project location



Project area TĀMAKI
MAKAURAU, AOTEAROA /
AUCKLAND, NEW ZEALAND

Project Overview

47km

Long

87m

Length of TBM

2.4km

Length of tunnels

2400 tonnes

Weight of TBM

4-way

Viaduct Connection
to SH20 in north

Direct

Connection to SH10
in south

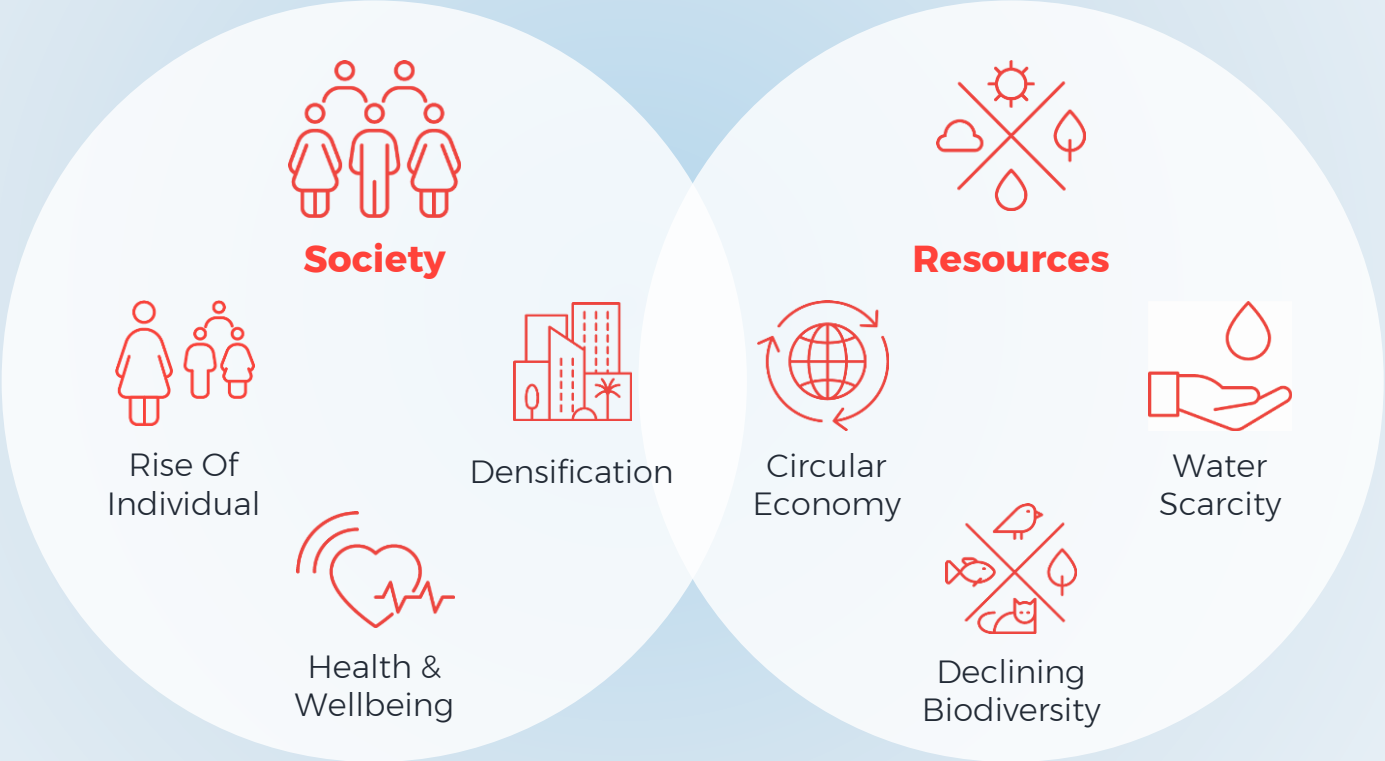
Extensive

Community facilities
and improvements

Excavated by **14.7m** Diameter
EPB Tunnel Boring Machine

Waterview Connection

Future Trends





Society

Community Opposition

Public outcry forces tunnel-plan rethink

11 Jun, 2009 9:27pm

🕒 3 minutes to read

NZ Herald

By: Mathew Dearnaley



< />

Fierce community opposition to Auckland's revised Waterview motorway project has prompted the Transport Agency to consider a slightly longer tunnel.

It told Auckland City's transport committee yesterday it was investigating the feasibility of joining two tunnel sections to keep the road underground for about





Project Objectives

1. Demonstrable Commitment to Zero Harm

- Safety in Design
- Safe Methodology
- Safety Talked about & Visible on site
- Safety for the Community
- Safety Underpinning Wellbeing





Project Objectives

2. Fully Integrated Link Between SH20-SH16, Efficient & Safe to Use & Maintain

- High Quality Infrastructure – maximises tunnel availability, Minimises O&M costs
- O&M regime respects needs of users
- Traffic Management that enhances efficiency of wider network
- Integrated with all modes of transport and the urban landscape

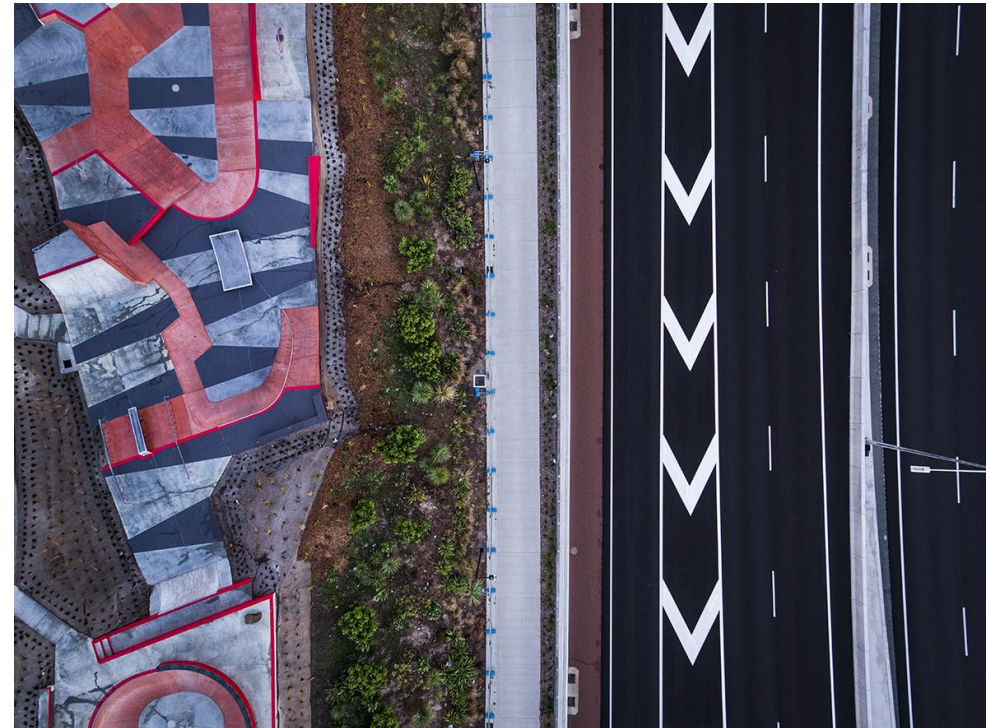




Project Objectives

3. Balance Between Social, Environmental & Economic Imperatives

- Respect the local community & the environment
- Comply with relevant conditions
- Looks good & lasts – award winning & sustainable





Project Objectives

4. *Best Use of the Money*

- Controlled spending
- Clear value for money
- Innovative design & construct
- Beat the TOCs





Project Objectives

5. *Highly Collaborative Relationships & Interfaces*

- Within our Alliance
- With AC, AT & AMA
- Alliance & JTOC
- With our suppliers & subbies
- With others doing work in the area
- Within the community & wider stakeholders





Project Objectives

6. Exceptional People Development

- Enduring high performance culture
- Embedded One Team framework
- Clear understanding of roles
- Connection back to home organisations
- Opportunity, Development, Recognition, Satisfaction
- Work Life Balance





Resources

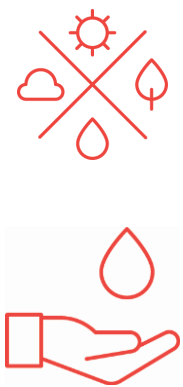


Waterview Connection provided many benefits to the community:



- Economic
- Environment & Sustainability
- Social Health
- Educational





Resources

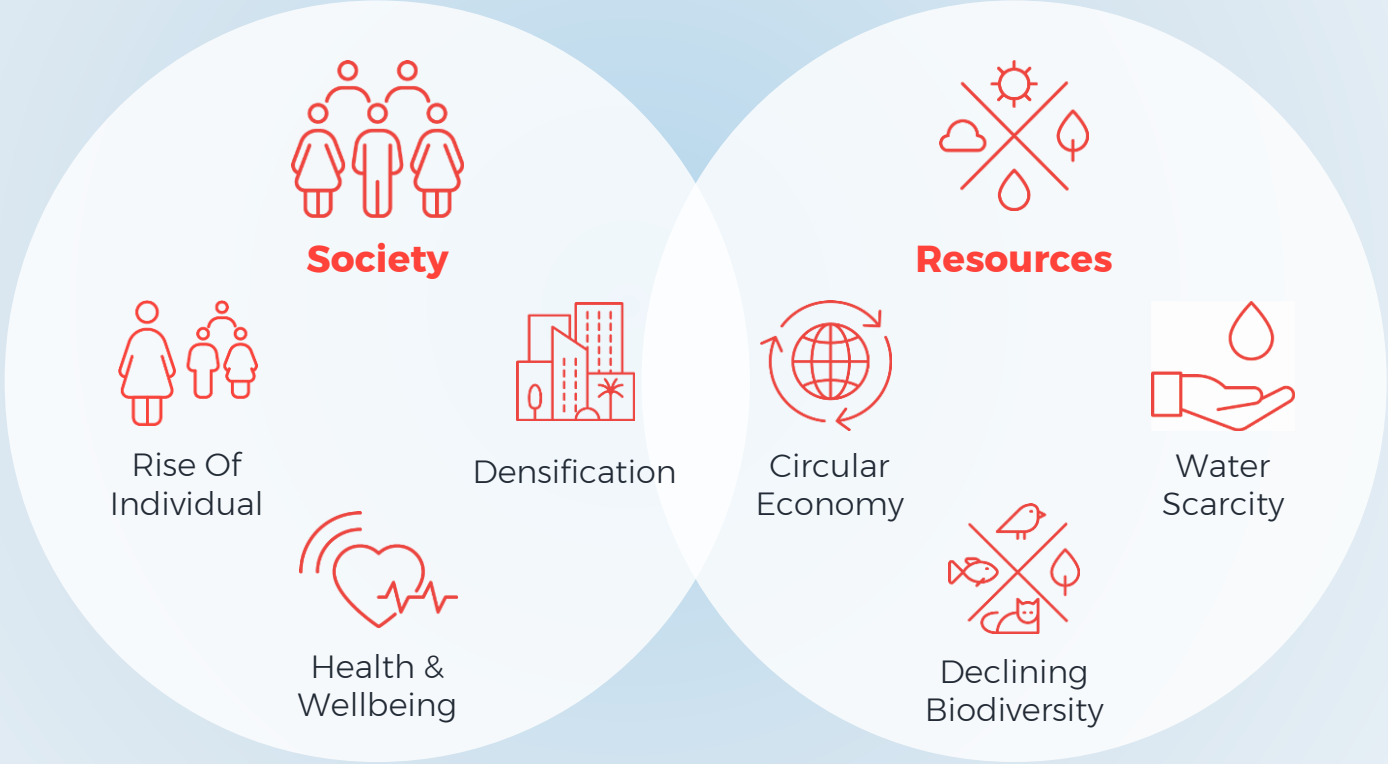
Transforming Oakley Creek created access to a naturalised community water feature

- Water capture & reuse
- Stream re-routing
- Early works was re-directing the stream



Waterview Connection

Future Trends



LIVES ABOVE LIVES BELOW

A year after eager motorists **made** their first journeys **through** the just-opened Waterview Tunnel, **Cherie Howie** **meets** those making a living in it, and a life above it.
Visuals / **Michael Craig**. Design / **Paul Slater**

Scroll down

80

80

80

Legacy



Waterview School pupils in their classroom overlooking the tunnels' northern portal

“We feel like we have the best [classroom] hub, because we’ve got the best view of the tunnel entrance”.



After a cuddle goodbye, Colidcott is on his bike by 7.30am, bound for Western Springs College, where he’s head of technology.

He’ll be there in 15 minutes, thanks to the Shared Pathway, a combined walking and cycle path built as part of the Waterview project after locals fought for benefits from the tunnel.

After school, the 15 year old friends like to ride to the pump track at the Waterview Reserve BMX park, next to the northbound tunnel exit, where public amenities built as part of the motorway project include a playground, basketball courts and skate park.

Legacy



“Not only are we here to keep Auckland moving, we’re also here to provide value for money... we’re all taxpayers, so the best value we can get means there’s more money for other things.”

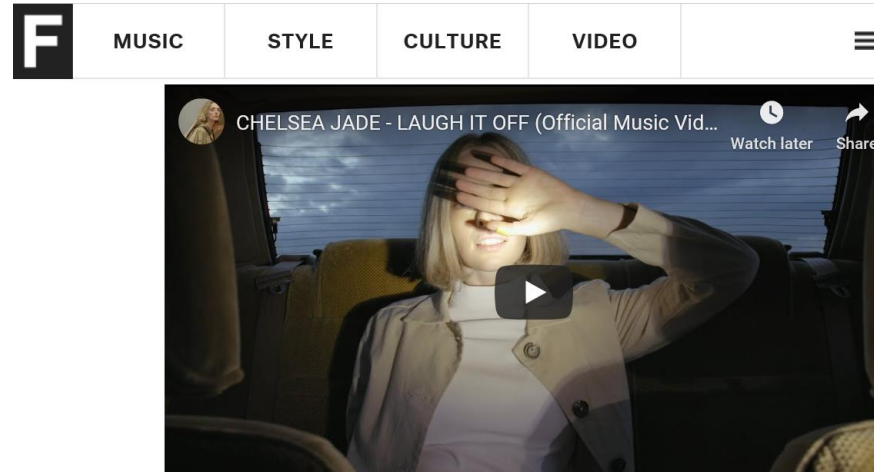
And this tunnel, where he spends so much of his life, isn’t just a place to earn a crust. It’s about those he holds most dear, too.

It brings them together, he says.

“We’ve all got friends and family and we all want to have a reasonable quality of life, so it’s quite rewarding in that respect.

“You’re actually making a contribution to society, rather than just turning up and thinking, ‘Ok, I’ve got so many job sheets to get through’.”

Legacy



As for the video, she adds: “Auckland has a boner for the tunnel in this video. My twitter feed was awash with adoration for structure that simply improved a commute. That sense of majesty over something so mundane is exactly what I look for in a visual cue. It aligns so beautifully with how I want my songs to convey my experience, where I indulge my emotions until they crash land with a kind of mocking perspective. Director Alex Gandar and I decided we would ride this sense of absurdity by driving through the Waterview Tunnel as many times as we could before the sun came up. We barely planned beyond that and it became an exercise in improvisation. We’ve never not meticulously planned any of our many videos so it was a new risk. We left with footage of real me, a petrol headache and anecdotal evidence that yes – it is a ***** good tunnel.”

stuff

entertainment

Alice Snedden: An ode to the mighty Waterview Tunnel

Alice Snedden · 05:00, Jul 16 2017



I immediately got in the car and drove through the tunnel just for the sake of it. I can stay on the motorway the whole way to the airport!! This tunnel is honestly incredible. No disrespect to the Sky Tower, but you're expensive, and parking close to you is a nightmare. This tunnel is maybe the best thing we've ever done. It's underground, for goodness sake. Just think of the engineering that went into constructing this masterpiece, a beautiful example of what humans are capable of and I swear to God if I hear anyone say otherwise, I will lose it!

Q & A

Charlie Jewkes

Charlie.Jewkes@wsp.com

*WSP Australia Pty Ltd
900 Ann Street, Level 12
Fortitude Valley, QLD 4006
+61 7 3854 6884*

wsp.com

Upcoming Webinars

Tell your friends

Revitalising Communities and Creating Public Space in Victoria

Thursday 30 April, 12pm (AEST)



Sasha White
Senior Principal Structural Engineer
Australia



Bernadette Fitzgerald
Director Sustainability
Australia

Creating Smart Cities for the Future

Tuesday 5 May, 12pm (AEST)

Designing Transport Facilities for all Ages and Abilities (AAA) in the Community

Wednesday 13 May, 12pm (AEST)