



Future Ready Project Webinar Series

Designing transport facilities for all Ages and Abilities (AAA) in the community



Acknowledgement of Country

We would like to pay our respect and acknowledge all the traditional custodians of this land on which we meet.

We would like to pay our respects to Elders past, present and future.

We would like to acknowledge the Tangata Whenua of Aotearoa (the people of the land of New Zealand), the Maori people, Rangitane Iwi.



Future Ready Project Webinar Series

Designing transport facilities for all Ages and Abilities (AAA) in the community

Future Ready

**See the future
more clearly**

**Design for
it today**

**Better
outcomes for
people and
places**

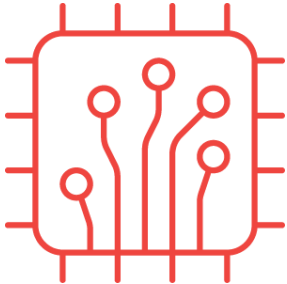
Taking a Holistic View



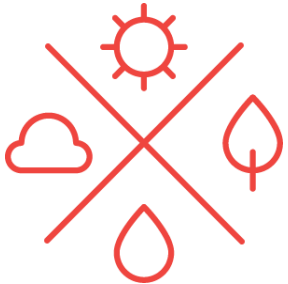
Climate



Society



Technology



Resources

Speaker



Peter Kortegast

New Zealand Pedestrian and Cycling Design Discipline Lead
Transport Engineer



He Ara Kotahi Bridge and Pathway

The pathway that brings people together - Application AAA user approach



Project Location

Project area located
Palmerston North city,
in Aotearoa, New Zealand



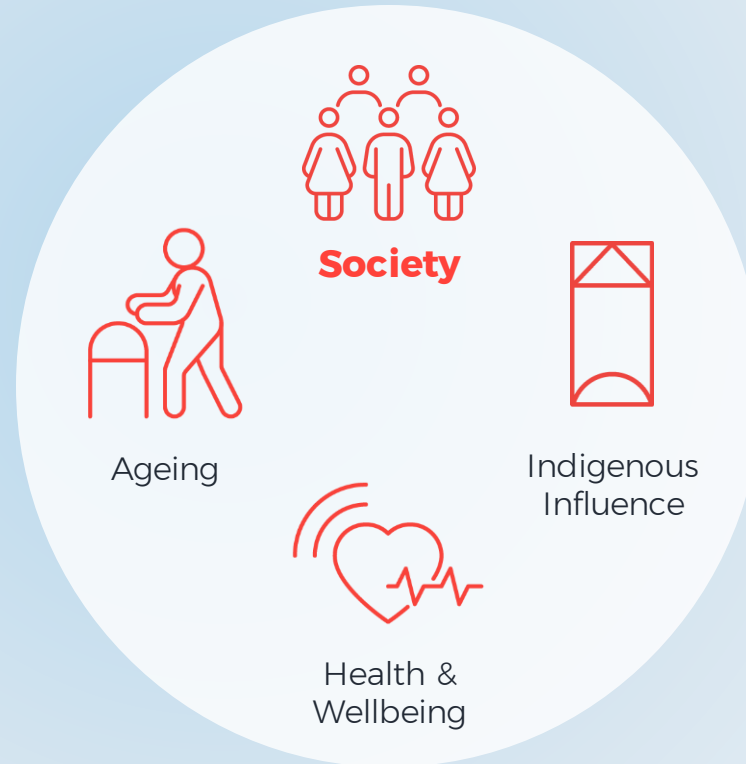
City Centre and Residential community

Massey University & Linton Army Base 15,000 Staff and Students



He Ara Kotahi

Future Trends

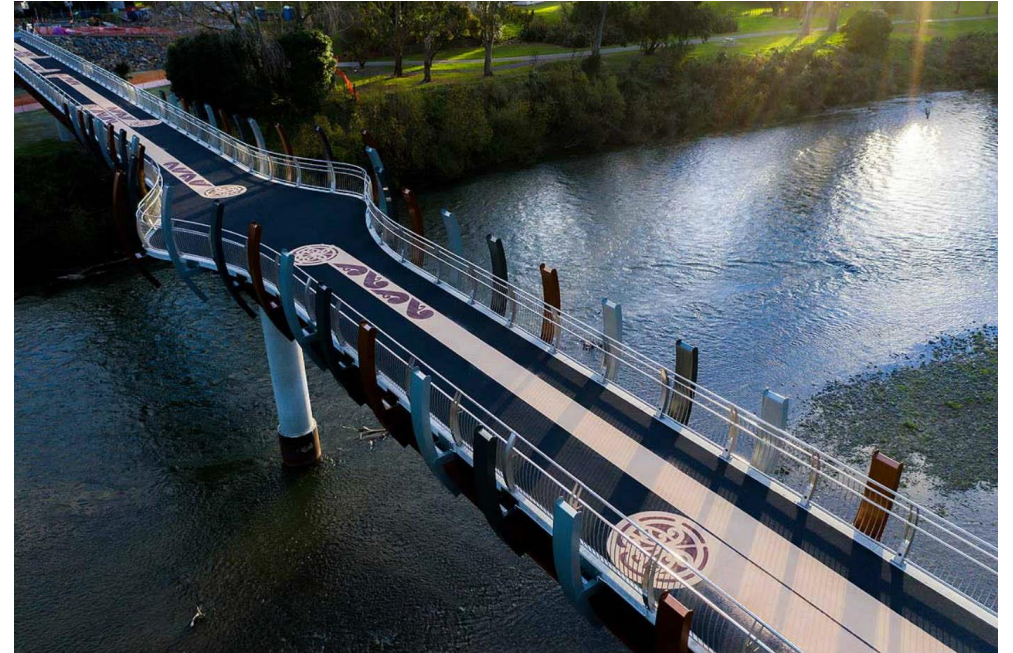




Future Trend

Indigenous Influence - Manawatu “Heart Standing Still”

- A rise in Indigenous beliefs and customs in how we deliver solutions
- Indigenous traditions, customs included in designs





Future Trend

Health & Wellbeing

- Trend to healthier lifestyles sees increased demand in healthy recreational and transport options
- Though in New Zealand we are seeing an increase in obesity
- Through effective urban planning we can promote healthier lifestyles





Designing for All Ages and Abilities users - AAA





Other User Types





A community place not just infrastructure





Night and Day





Future Trend

Aging Population

- Trend to an aging population across both Australia and New Zealand.
- Residents are increasingly demanding safe, accessible and inclusive transport systems for all
- Potential mobility restrictions and safety requirements for the elderly need to be considered



Shared Space

Mobility Accessibility, Karaka Tree Story, Part of Community, Inviting



Level of Service Approach (CLOSA - 2020 NZTA)

Level of Service	Criteria
A	Quality surface, wide path 4m+, low Ped conflict, No pinch points, Good CPTED, lighting, Flat gradient, High Amenity, separation from traffic
B	
C	
D	
E	
F	Poor surface, Narrow path, high Ped conflict, pinch points, Poor CPTED - social separation, no lighting, steep gradient, low Amenity, traffic exposure



Key Points For Providing AAA User

- Understand your user types from surrounding community, Age profile, gender profile, latent demand, new technology
- Understand you may not be able to provide for all users but recommend focus on latent demand users and vulnerable
- May need separate facilities for ***“Interested but Concerned”*** vs ***“Brave and Fearless”***
- Focus on level of service shift but may be too much of a step for a community to go from zero to hero LOS F to LOS A.
- Sometimes place making, reduced speed on low volume roads or city centres is all you need
- Have fun be creative

Celebrate Success



Q & A

Peter Kortegast

Peter.Kortegast@wsp.com

*WSP
The Westhaven
100 Beaumont Street
Auckland 1010
New Zealand*

wsp.com